



HERRESHOFF CLASSIC YACHT REGATTA 2024

August 24 & 25, 2024

SAILING INSTRUCTIONS

The organizing authority is the Herreshoff Marine Museum.

1. RULES

1.1 The event will be governed by the following rules...

1.1.1 The Racing Rules of Sailing (RRS 2021-2024), US Sailing Prescriptions.

1.1.2 The 2024 Classic Yachts Challenge Series (CYCS) Regulations available at the [CYOA website](http://www.classicyachts.org):

<http://www.classicyachts.org>

1.1.3 The 2024 Classic Rating Formula (CRF 2024)

1.1.4. Relevant One-Design and Formula class rules

1.1.5 Narragansett Bay S Class By-Laws

1.1.6 For the purposes of rules 14 and 44.1, any contact between boats shall be considered serious damage. This changes rule 44.1.

1.1.7 In the event of a conflict between the Notice of Race (NOR) and the Sailing Instructions (SIs), the SIs shall prevail. This changes rule 63.7.

2. ELIGIBILITY and ENTRY: Entry and Fees are per NOR 4 and 6.

3. NOTICE TO COMPETITORS: Notices to competitors, including protest notices, will be posted on the Official Notice Board at the Museum. They will also be posted on the event site and distributed via email to all competitors.

4. CHANGES to SAILING INSTRUCTIONS: Any changes in the Sailing Instructions will be read over VHF channel 71 and posted on the Official Notice Board at the Museum. They will also be posted on the event site and distributed via email to all competitors.

5. SCHEDULE: There is a competitor briefing at 1000 hours on both Saturday and Sunday. The first warning signal on Saturday will be 1200 hours for CRF classes and 1230 hours for the one-design classes. The first warning signal on Sunday will be 1200 for the CRF classes and 1230 for the one-design classes.

6. SIGNALS MADE ASHORE: Signals made ashore will be displayed from the Herreshoff Marine Museum flagpole. Code Flag "AP", Answering Pennant, means the races have been postponed. The warning signal will be made not less than one-half hour after AP is lowered. An announcement regarding the Race Committee's intentions will be made on VHF channel 71.

7. RACING AREA, COURSE DESIGNATIONS and COURSES: The course will be posted at the warning signal from the committee boat and will be announced on VHF channel 71. The course for one-designs will be a windward/leeward course using set marks. The following is a list of buoys from which the CRF course will be selected:

<u>Designation</u>	<u>Description</u>	<u>Location</u>
A.	RG Flr Bell	South of Poppasquash Point
B.	R "2"	West of Hog Island
C.	G "1" FLG	NE of Homestead Point
D.	RG "SP" FLR Bell	NNE of Sandy Point
E.	RN "2"	.4 miles SW of Hog Island
F.	G "3" FLG Bell	South of Hog Island
G.	RN "2"	Southwest of Bristol Point
H.	GC "3"	East of Hog Island
I.	RN "2"	East of Potter Cove
J.	R "8" FL R	West of Poppasquash Neck
L.	R "26" FL R Bell	Southeast of Sandy Point
N.	RN "2" FI R 2.5	1.2 miles south of Hog Island
O.	R "6" FL R	West of Poppasquash Point
P.	RG N	.3 miles west of the Museum
4.	Finish between the Herreshoff Museum flagpole and the nearby orange tetrahedron	

Additional marks not displayed on the race chart:

K.	R "24" FI R Bell	North of Dyer Island
M.	RG "MH"	FI R Gong Mount Hope Bay
Q.	RG N	North of Providence Pt.
R.	GR "OL" Bell	Ohio Ledge
1.	Special Mark #1	(see description below)
2.	Special Mark #2	(see description below)
3.	Special Mark #3	(see description below)

Special Mark Description: The Race Committee may elect to position a special mark which will be a yellow or orange tetrahedron to achieve a particular course configuration. If used, the distance and bearing to the special mark from the committee boat will be displayed below the course. In some cases, the direct line from the committee boat to the special mark may be across land. In this case, the direct route is not recommended.

Turning marks for each course will be posted on a white board on the committee boat in order of rounding, with the subscript for each mark designating the required side: P means leave to Port, S means leave to Starboard. The Race Committee will also announce the courses on VHF channel 71.

Marks to be Observed: Except when used as a turning mark, the following marks shall be observed at all times: Castle Light (FL R 6 Sec); C "3" Usher Cove; RG FL R Bell south of Poppasquash Point; C "3" east of Hog Island; Hog Island Shoal Light; RN "2" .4 Miles SW of Hog Island.

8. STARTING & FINISHING

8.1 Races will be started in accordance with RRS 26. The start location will be southwest of Poppasquash Point for all classes.

8.2 Class Flags: A scratch sheet will be posted and issued at the morning briefing listing the classes and class flags.

8.3 The start and finish line will be between a staff flying an orange flag on the committee boat and the course side of a nearby mark. Unless mark 4 is signaled as part of the course, the start and finish line will be in approximately the same location for each race.

9. RECALLS: Individual recalls will be in accordance with racing rule 29.1. General recalls will be in accordance with racing rule 29.2. The race committee will endeavor to hail boats over early on VHF channel 71.

10. TIME LIMIT: The time limit for each class shall be 5 hours.

11. SCORING: CRF Divisions will be scored based on the lowest seconds per mile using CRF time on distance handicap factors (total corrected time/distance of course in NMs). The low point scoring system, Appendix A4, of the RRS will apply, except that a yacht's score will be the sum of her scores for all races. One race will constitute a series. In the event that boats in the same division sail courses of different lengths, the Corrected Speed calculation will be used to normalize results.

12. PENALTY SYSTEM

12.1 For CRF classes, the Scoring Penalty of rule 44.3 will apply. The penalty will be 20% of the number of boats entered in the applicable class. The minimum penalty shall be 2 places.

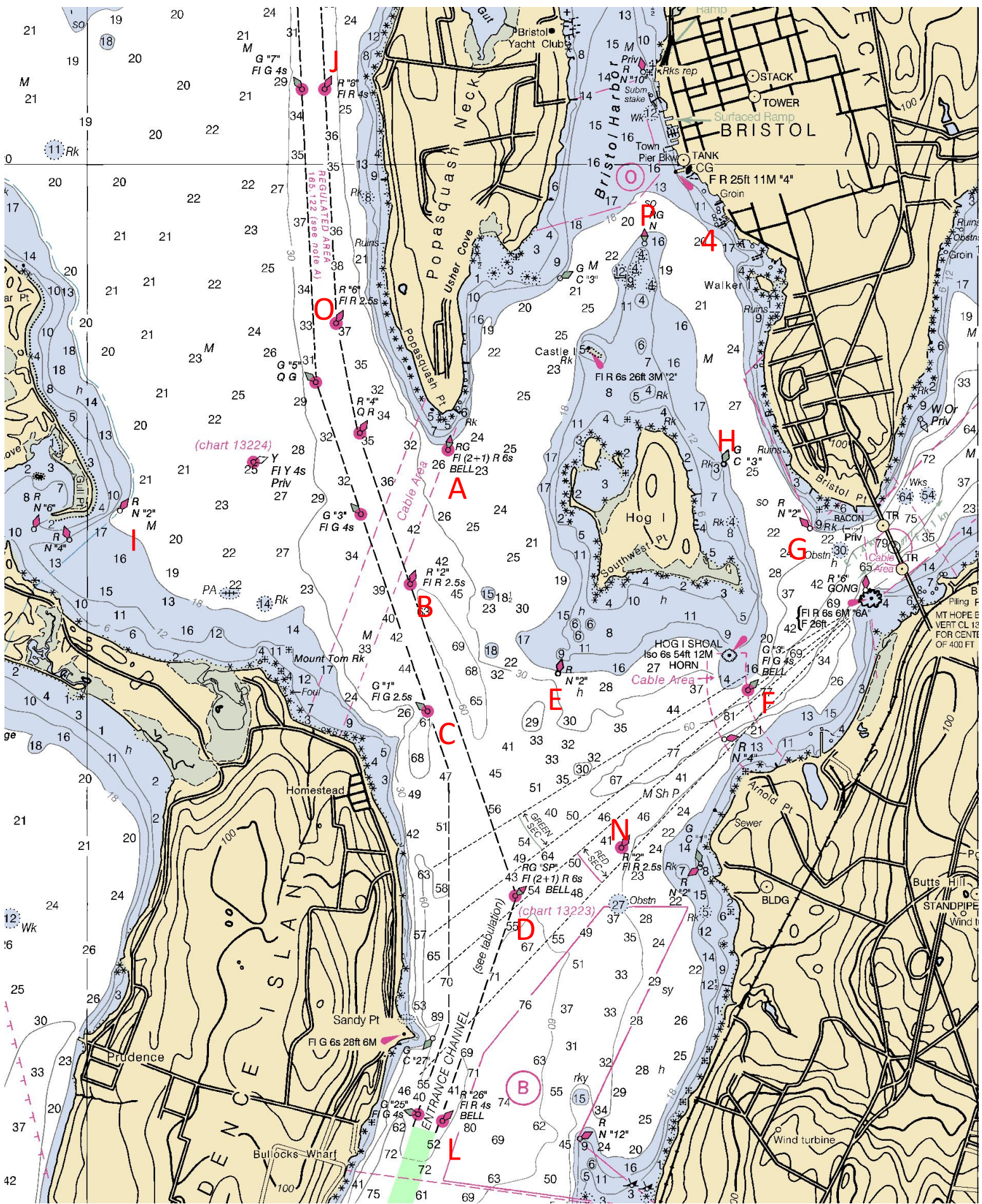
12.2 For one-design classes, RRS 44.1 is changed so that the two-turn penalty is replaced with by the one-turn penalty.

12.3 The penalty, if any, for a violation of a rule other than a rule of Part 2 shall be at the sole discretion of the Protest Committee and may be other than disqualification. This changes rule 64.1.

13. PROTESTS: Protests must be filed within one (1) hour of a yacht's finish in the last race of the day using the standard [US Sailing Hearing Request Form](#). Yachts must notify the race committee of intent to protest immediately upon crossing the finish line for the race in which the protest occurred. Hearings may commence as soon as one hour after a protesting yacht's finish and may take place via Zoom videoconference.

14. INFORMATION: Additional information may be received from the Herreshoff Marine Museum, Box 450, Bristol, RI 02809. Phone: (401) 253-5000, www.herreshoff.org, email: info@herreshoff.org.

15. SAFETY: All boats not within their starting sequence must stay well clear of the starting area. Boats failing to comply with this requirement may be protested by the Race Committee and risk a penalty assigned by the Protest Committee.



Herreshoff Marine Museum
HERRESHOFF CLASSIC YACHT REGATTA 2024
Newport to Bristol Feeder Race
August 23, 2024

SAILING INSTRUCTIONS

The organizing authority is the Herreshoff Marine Museum.

1. RULES The event will be governed by the following rules...

- 1.1 The Racing Rules of Sailing (RRS 2021-2024), US Sailing Prescriptions.
- 1.2 The 2024 Classic Rating Formula (CRF 2024)
- 1.3 Relevant One-Design and Formula class rules
- 1.4 The Sailing Instructions
- 1.5 For the purposes of rules 14 and 44.1, any contact between boats shall be considered serious damage. This changes rule 44.1.
- 1.6 In the event of conflict between the NOR and SI, the SI shall prevail. This changes rule 63.7.

2. ELIGIBILITY & ENTRY Eligibility, Entry and Fees are per NOR 4 and 6.

3. NOTICE TO COMPETITORS Notices to competitors, including protest notices, will be posted on the official notice board at the Herreshoff Marine Museum and on the event site at www.herreshoff.org/regatta and will be emailed to all boats.

4. CHANGES TO SAILING INSTRUCTIONS Any changes in the Sailing Instructions will be posted on the event website and emailed to all boats.

5. SCHEDULE The first warning signal for the race on Friday will be 1300 hours. The starting order will be announced on VHF 72.

6. SIGNALS MADE ASHORE There will be no signals made ashore. Any signal will be displayed from Race committee boat in the starting area and intentions will be broadcast on VHF 72.

7. RACING AREA, COURSE DESIGNATIONS AND COURSES The course will be posted prior to the warning signal from the committee boat, and will be announced on VHF 72. The following is a list of buoys from which the course will be selected:

Desg	Description	Approximate Location
A.	RG Flr Bell	South of Poppasquash Point
B.	R "2"	West of Hog Island
C.	G "1" FLG	NE of Homestead Point
D.	RG "SP" FLR Bell	NNE of Sandy Point
E.	RN "2"	.4 miles SW of Hog Island
F.	G "3" FLG Bell	South of Hog Island
G.	RN "2"	Southwest of Bristol Point
H.	GC "3"	East of Hog Island
I.	RN "2"	East of Potter Cove
J.	R "8" FL R	West of Poppasquash Neck
K.	R "24" FI R Bell	North of Dyer Island
L.	R "26" FL R Bell	Southeast of Sandy Point
M.	G "17" QG	.34 NM East of Gould Is.
N.	RN "2" FI R 2.5	1.2 miles south of Hog Island
O.	R "6" FL R	West of Poppasquash Point
P.	RG N	.3 miles west of the Museum
Q.	RG N	.54 NM North of Providence Pt.
R.	GR "OL" Bell	Ohio Ledge
S.	R "2" FI R 4s Bell	.4 NM NE Conanicut Is.
T.	G "WR 21" QG	.42 NM SE Prudence Is.
U.	R "8" FI R Bell	.25 NM WNW Patience Is.
V.	RG "EP" FI G Bell	North of Pell Bridge
W.	G "11" QG Bell	East of The Dumplings
4.	Finish mark in the vicinity of the Herreshoff Museum flagpole	

Turning marks for each course will be posted on a white board on the committee boat in order of rounding, with the subscript for each mark designating the required side: P means leave to Port, S means leave to starboard. The race committee will also announce the courses on VHF 72.

Marks To Be Observed: Except when used as a turning mark, the following marks shall be observed at all times: Castle Light (FL R 6 Sec); C "3" Usher Cove; RG FL R Bell south of Poppasquash Point; C "3" east of Hog Island; Hog Island Shoal Light; RN "2" .4 Miles SW of Hog Island.

If the course requires passing under the Newport Pell Bridge, all boats shall pass through the center span only. The center span shall rank as a gate.

8. THE START & FINISH

- 8.1 Races will be started in accordance with RRS 26. The start location will be in the general vicinity between the Newport Bridge and the south end of Gould Island.
- 8.2 Start and finish line: The start and finish line will be between a flag on the committee boat and the nearby mark. Unless the course is shortened, it is expected that the finish will be between the Herreshoff Museum flagpole and a nearby tetrahedron.

9. RECALLS Individual recalls will be in accordance with racing rule 29.1. General recalls will be in accordance with racing rule 29.2. The race committee will endeavor to hail boats over early on VHF 72.

10. TIME LIMIT The time limit for each class shall be 4 hours.

11. SCORING The low point scoring system, Appendix A4 of the RRS will apply. One race is scheduled.

12. PENALTY SYSTEM

- 12.1 The Scoring Penalty of rule 44.3 will apply. The penalty will be 20% of the number of boats entered in the applicable class. The minimum penalty shall be 2 places.
- 12.2 The penalty, if any, for a violation of a rule other than a rule of Part 2 shall be at the sole discretion of the Protest Committee, and may be other than disqualification. This changes rule 64.1.

13. PROTESTS Protests must be filed within 1 hour of a boat's finish in the last race of the day in writing on forms available from the race committee. Competitors must notify the race committee of intent to protest immediately upon crossing the finish line. Hearings may commence one hour after a protesting boat's finish.

14. INFORMATION Additional information may be received from the Herreshoff Marine Museum, Box 450, Bristol, RI 02809-0450. Phone: (401) 253-5000, email: w.lynn@herreshoff.org.

15. SAFETY All boats not within their starting sequence must stay well clear of the starting area. Boats failing to comply with this requirement may be protested by the Race Committee and risk a penalty assigned by the Protest Committee.